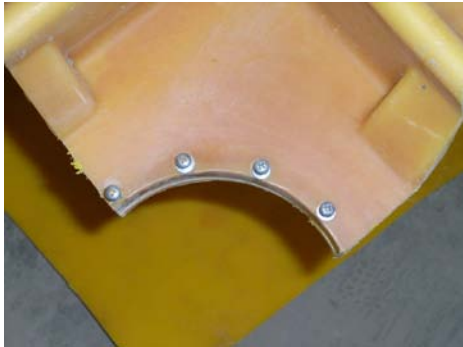


# Mini-Bulk / Shuttle Preparation for Recycling

- Tanks should be triple or pressure rinsed and be clean inside and out. Allow tanks to dry.
- A large hole (20” diameter) may be cut in top-center portion of the tank and another in the bottom to provide for proper rinsing (instead of trying to pump out rinseate).
- All plumbing (caps, meters, pumps, or **any metal pieces** *example 1*) should be removed and disposed of by normal means.
- If several tanks are to be shipped, cut the top out of a large tank and use it as a receptacle for several other tanks cut in 2ft. by 2ft. pieces. (Examples 2 & 3)
- Carefully use a reciprocating saw, circular, and/or table saw to make these cuts.
- Examples below are of only one type of Mini-Bulk but will serve as a guideline on the preparation of others. If you have question contact the Department of Agriculture at 1-605-773-4432

**Example 1**



**Example 2**



**Example 3**

